

Surface Mount Frequency Mixer

SKY-53MHR+ SKY-53MHR

Level 13 (LO Power +13 dBm) 2800 to 5300 MHz



CASE STYLE: BJ398

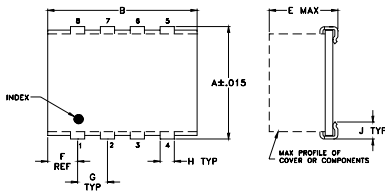
Maximum Ratings

Operating Temperature	-40°C to 85°C
Storage Temperature	-55°C to 100°C
RF Power	200mW
IF Current	40mA
Permanent damage may occur if any of these limits are exceeded.	

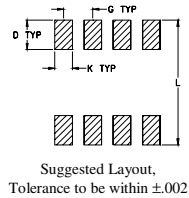
Pin Connections

LO	5
RF	1
IF	7
GROUND	2,3,4,6,8

Outline Drawing



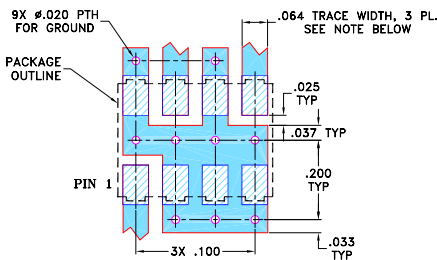
PCB Land Pattern



Outline Dimensions (inch/mm)

A	B	C	D	E	F	G
.305	.390	--	.100	.105	.045	.100
7.75	9.91	--	2.54	2.67	1.14	2.54
H	J	K	L	wt		
.047	.065	.065	.325	grams		
1.19	1.65	1.65	8.26	0.20		

Demo Board MCL P/N: TB-11 Suggested PCB Layout (PL-056)



NOTES:

- TRACE WIDTH IS SHOWN FOR ROGERS RO4350B WITH DIELECTRIC THICKNESS .030" ± .002". COPPER: 1/2 OZ. EACH SIDE. FOR OTHER MATERIALS TRACE WIDTH MAY NEED TO BE MODIFIED.
 - BOTTOM SIDE OF THE PCB IS CONTINUOUS GROUND PLANE.
-

Notes

- Performance and quality attributes and conditions not expressly stated in this specification document are intended to be excluded and do not form a part of this specification document.
- Electrical specifications and performance data contained in this specification document are based on Mini-Circuit's applicable established test performance criteria and measurement instructions.
- The parts covered by this specification document are subject to Mini-Circuits standard limited warranty and terms and conditions (collectively, "Standard Terms"); Purchasers of this part are entitled to the rights and benefits contained therein. For a full statement of the Standard Terms and the exclusive rights and remedies thereunder, please visit Mini-Circuits' website at www.minicircuits.com/MCLStore/terms.jsp

Features

- wide bandwidth, 2800 to 5300 MHz.
- low conversion loss, 5.7 dB typ.
- good L-R isolation, 28 dB typ.
- J-leads for strain relief

Applications

- line of sight links
- fixed satellite

Electrical Specifications

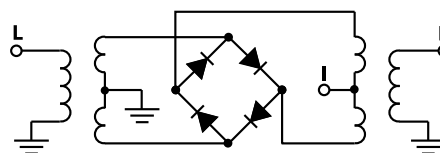
FREQUENCY (MHz)		CONVERSION LOSS (dB)		LO-RF ISOLATION (dB)		LO-IF ISOLATION (dB)		IP3 at center band (dBm)
LO/RF	IF	Mid-Band	Total Range	Typ.	Min.	Typ.	Min.	Typ.
$f_L - f_U$	\bar{X}	σ	Max.					
2800-5300	DC-500	5.7	9.5	28	15	12	8	19

1 dB COMP.: +9 dBm typ.

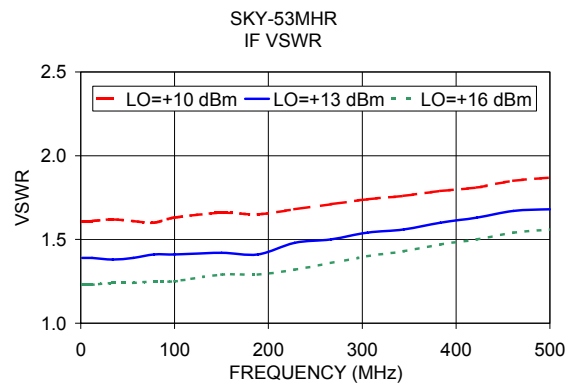
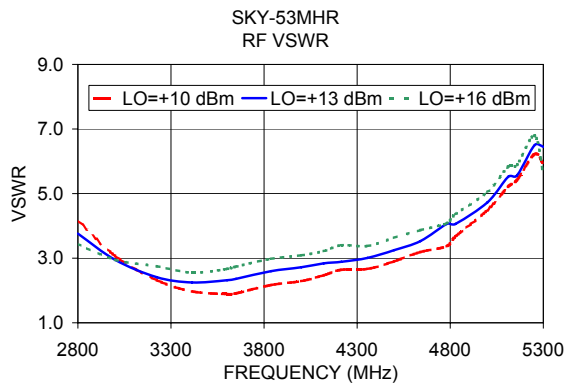
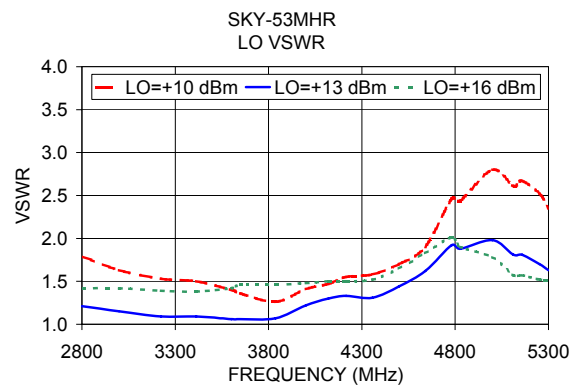
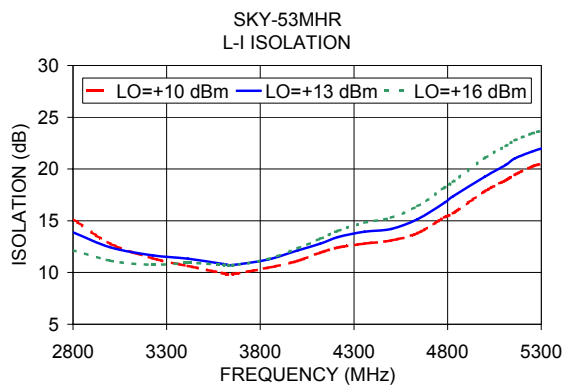
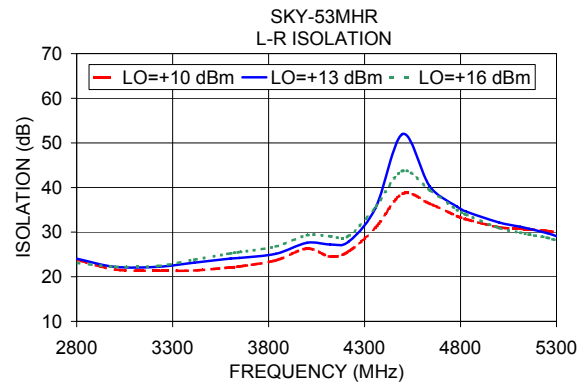
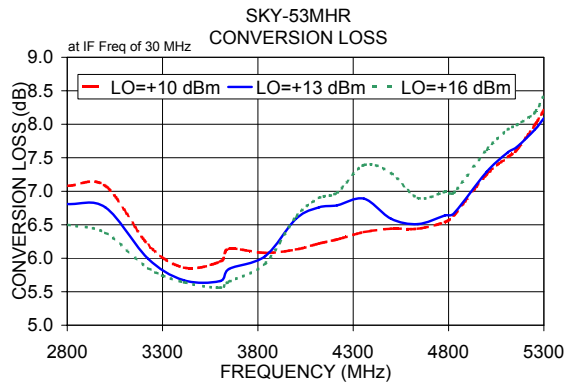
Typical Performance Data

Frequency (MHz)		Conversion Loss (dB)	Isolation L-R (dB)	Isolation L-I (dB)	VSWR RF Port (:1)	VSWR LO Port (:1)
RF	LO	LO +13dBm	LO +13dBm	LO +13dBm	LO +13dBm	LO +13dBm
2800.00	2830.00	6.81	24.05	13.89	3.76	1.21
3000.00	3030.00	6.76	22.21	12.43	2.95	1.15
3224.53	3254.53	5.99	22.25	11.65	2.41	1.09
3413.21	3443.21	5.67	23.17	11.34	2.25	1.09
3601.89	3631.89	5.66	24.09	10.82	2.32	1.06
3649.06	3679.06	5.84	24.22	10.73	2.36	1.06
3837.74	3867.74	6.03	25.15	11.25	2.60	1.07
4000.00	4030.00	6.59	27.60	12.14	2.72	1.22
4120.75	4090.75	6.76	27.24	12.80	2.84	1.30
4215.09	4185.09	6.79	27.81	13.43	2.89	1.33
4356.60	4326.60	6.89	35.40	13.95	3.01	1.31
4498.11	4468.11	6.59	52.00	14.21	3.25	1.44
4639.62	4609.62	6.51	40.26	15.15	3.53	1.62
4781.13	4751.13	6.64	35.74	16.72	4.06	1.92
4828.30	4798.30	6.67	34.61	17.36	4.06	1.88
5000.00	4970.00	7.29	19.27	19.27	4.73	1.98
5111.32	5081.32	7.58	31.21	20.41	5.52	1.81
5158.49	5128.49	7.66	30.74	21.01	5.56	1.81
5252.83	5222.83	7.92	29.76	21.69	6.50	1.70
5300.00	5270.00	8.09	29.09	21.97	6.45	1.63

Electrical Schematic



Performance Charts



Notes

- Performance and quality attributes and conditions not expressly stated in this specification document are intended to be excluded and do not form a part of this specification document.
- Electrical specifications and performance data contained in this specification document are based on Mini-Circuit's applicable established test performance criteria and measurement instructions.
- The parts covered by this specification document are subject to Mini-Circuit's standard limited warranty and terms and conditions (collectively, "Standard Terms"); Purchasers of this part are entitled to the rights and benefits contained therein. For a full statement of the Standard Terms and the exclusive rights and remedies thereunder, please visit Mini-Circuit's website at www.minicircuits.com/MCLStore/terms.jsp

